

Year 6 Term 2B

Spellings

Name: _____



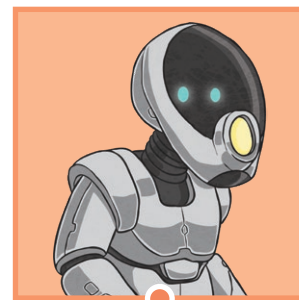
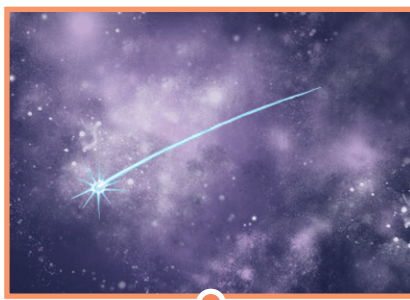
Words with endings which sound like /shuhl/ after a vowel letter

Week 1

Tick the columns as you follow the instructions from left to right. Make sure you spell the words in the 'write' column. If you spell the word incorrectly, write it again in the 'correction' column.

| | Look | Say | Cover | Write | Check | Correction |
|------------|------|-----|-------|-------|-------|------------|
| official | | | | | | |
| special | | | | | | |
| artificial | | | | | | |
| social | | | | | | |
| racial | | | | | | |

Now that you know your spellings, can you match them with the correct picture?



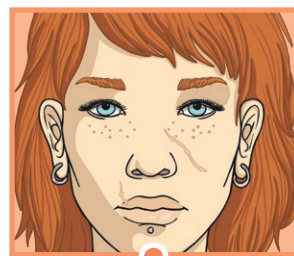
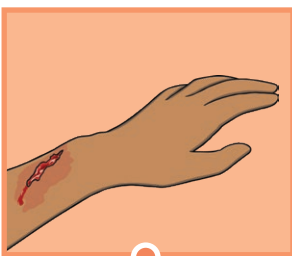
Words with endings which sound like /shuhl/ after a vowel letter

Week 1

Tick the columns as you follow the instructions from left to right. Make sure you spell the words in the 'write' column. If you spell the word incorrectly, write it again in the 'correction' column.

| | Look | Say | Cover | Write | Check | Correction |
|-------------|------|-----|-------|-------|-------|------------|
| crucial | | | | | | |
| facial | | | | | | |
| beneficial | | | | | | |
| superficial | | | | | | |
| antisocial | | | | | | |

Now that you know your spellings, can you match them with the correct picture?



Other Ways to Help You Learn Your Spellings

- **Bubble Letters**

Write your spelling words using bubble lettering and then colour them in.

s p e l l

- **Speed Write**

How many times can you write each of your spelling words in 30 seconds?

- **Word Scramble**

Ask a friend or grown-up to scramble all of the letters in each of your spellings.
Can you work out each anagram?

- **Spelling Story**

Can you write a passage of text that contains all ten of your spelling words?
It's not as easy as you think!

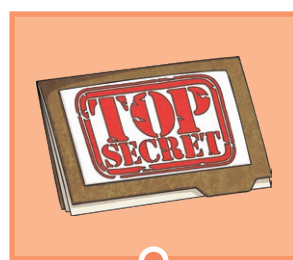
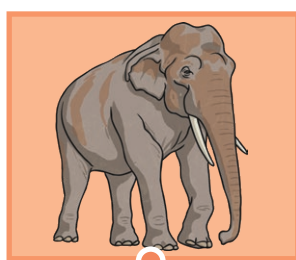
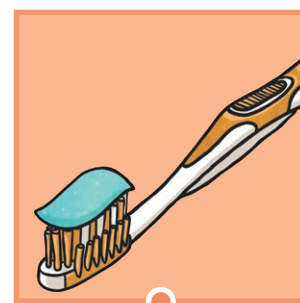
Words with endings which sound like /shuhl/ after a consonant letter

Week 2

Tick the columns as you follow the instructions from left to right. Make sure you spell the words in the 'write' column. If you spell the word incorrectly, write it again in the 'correction' column.

| | Look | Say | Cover | Write | Check | Correction |
|---------------------|------|-----|-------|-------|-------|------------|
| partial | | | | | | |
| confidential | | | | | | |
| essential | | | | | | |
| substantial | | | | | | |
| torrential | | | | | | |

Now that you know your spellings, can you match them with the correct picture?



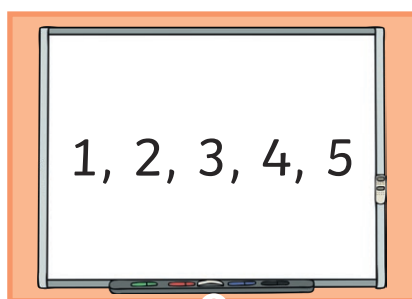
Words with endings which sound like /shuhl/ after a consonant letter

Week 2

Tick the columns as you follow the instructions from left to right. Make sure you spell the words in the 'write' column. If you spell the word incorrectly, write it again in the 'correction' column.

| | Look | Say | Cover | Write | Check | Correction |
|--------------------|------|-----|-------|-------|-------|------------|
| sequential | | | | | | |
| potential | | | | | | |
| spatial | | | | | | |
| martial | | | | | | |
| influential | | | | | | |

Now that you know your spellings, can you match them with the correct picture?



Other Ways to Help You Learn Your Spellings

- **Bubble Letters**

Write your spelling words using bubble lettering and then colour them in.

s p e l l

- **Speed Write**

How many times can you write each of your spelling words in 30 seconds?

- **Word Scramble**

Ask a friend or grown-up to scramble all of the letters in each of your spellings.
Can you work out each anagram?

- **Spelling Story**

Can you write a passage of text that contains all ten of your spelling words?
It's not as easy as you think!

Words with a 'soft c' spelt /ce/

Week 3

Tick the columns as you follow the instructions from left to right. Make sure you spell the words in the 'write' column. If you spell the word incorrectly, write it again in the 'correction' column.

| | Look | Say | Cover | Write | Check | Correction |
|--------------------|------|-----|-------|-------|-------|------------|
| cemetery | | | | | | |
| certificate | | | | | | |
| celebrate | | | | | | |
| necessary | | | | | | |
| deceased | | | | | | |

Now that you know your spellings, can you match them with the correct picture?



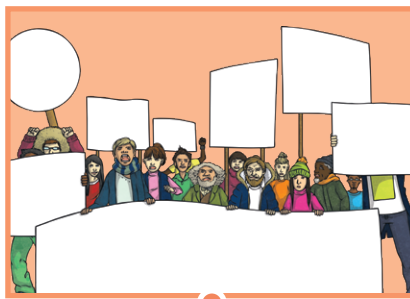
Words with a 'soft c' spelt /ce/

Week 3

Tick the columns as you follow the instructions from left to right. Make sure you spell the words in the 'write' column. If you spell the word incorrectly, write it again in the 'correction' column.

| | Look | Say | Cover | Write | Check | Correction |
|------------------|------|-----|-------|-------|-------|------------|
| December | | | | | | |
| sacrifice | | | | | | |
| hindrance | | | | | | |
| nuisance | | | | | | |
| prejudice | | | | | | |

Now that you know your spellings, can you match them with the correct picture?



Other Ways to Help You Learn Your Spellings

- **Bubble Letters**

Write your spelling words using bubble lettering and then colour them in.

s p e l l

- **Speed Write**

How many times can you write each of your spelling words in 30 seconds?

- **Word Scramble**

Ask a friend or grown-up to scramble all of the letters in each of your spellings.
Can you work out each anagram?

- **Spelling Story**

Can you write a passage of text that contains all ten of your spelling words?
It's not as easy as you think!

Word families based on common words, showing how words are related in form and meaning

Week 4

Tick the columns as you follow the instructions from left to right. Make sure you spell the words in the 'write' column. If you spell the word incorrectly, write it again in the 'correction' column.

| | Look | Say | Cover | Write | Check | Correction |
|--------------------|------|-----|-------|-------|-------|------------|
| accommodate | | | | | | |
| accompany | | | | | | |
| access | | | | | | |
| accuse | | | | | | |
| accost | | | | | | |
| accrue | | | | | | |
| accuracy | | | | | | |
| accomplish | | | | | | |
| accumulate | | | | | | |
| accentuate | | | | | | |

Other Ways to Help You Learn Your Spellings

- **Bubble Letters**

Write your spelling words using bubble lettering and then colour them in.

s p e l l

- **Speed Write**

How many times can you write each of your spelling words in 30 seconds?

- **Word Scramble**

Ask a friend or grown-up to scramble all of the letters in each of your spellings.
Can you work out each anagram?

- **Spelling Story**

Can you write a passage of text that contains all ten of your spelling words?
It's not as easy as you think!

Word families based on common words, showing how words are related in form and meaning

Week 5

Tick the columns as you follow the instructions from left to right. Make sure you spell the words in the 'write' column. If you spell the word incorrectly, write it again in the 'correction' column.

| | Look | Say | Cover | Write | Check | Correction |
|----------------------|------|-----|-------|-------|-------|------------|
| signature | | | | | | |
| assign | | | | | | |
| design | | | | | | |
| designate | | | | | | |
| significant | | | | | | |
| resignation | | | | | | |
| resign | | | | | | |
| insignificant | | | | | | |
| assignment | | | | | | |
| signal | | | | | | |

Other Ways to Help You Learn Your Spellings

- **Bubble Letters**

Write your spelling words using bubble lettering and then colour them in.

s p e l l

- **Speed Write**

How many times can you write each of your spelling words in 30 seconds?

- **Word Scramble**

Ask a friend or grown-up to scramble all of the letters in each of your spellings.
Can you work out each anagram?

- **Spelling Story**

Can you write a passage of text that contains all ten of your spelling words?
It's not as easy as you think!

Statutory Spelling Challenge Words

Week 6

Tick the columns as you follow the instructions from left to right. Make sure you spell the words in the 'write' column. If you spell the word incorrectly, write it again in the 'correction' column.

| | Look | Say | Cover | Write | Check | Correction |
|----------------------|------|-----|-------|-------|-------|------------|
| foreign | | | | | | |
| apparent | | | | | | |
| appreciate | | | | | | |
| persuade | | | | | | |
| individual | | | | | | |
| language | | | | | | |
| sufficient | | | | | | |
| determined | | | | | | |
| explanation | | | | | | |
| pronunciation | | | | | | |

Other Ways to Help You Learn Your Spellings

- **Bubble Letters**

Write your spelling words using bubble lettering and then colour them in.

s p e l l

- **Speed Write**

How many times can you write each of your spelling words in 30 seconds?

- **Word Scramble**

Ask a friend or grown-up to scramble all of the letters in each of your spellings.
Can you work out each anagram?

- **Spelling Story**

Can you write a passage of text that contains all ten of your spelling words?
It's not as easy as you think!